

CKTS	DIM A	DIM B	DIM C	DIM D
4	3.00	5.10	9.05	11.00
5	4.00	6.10	10.05	12.00
6	5.00	7.10	11.05	13.00
7	6.00	8.10	12.05	14.00
8	7.00	9.10	13.05	15.00
9	8.00	10.10	14.05	16.00
10	9.00	11.10	15.05	17.00
11	10.00	12.10	16.05	18.00
12	11.00	13.10	17.05	19.00
13	12.00	14.10	18.05	20.00
14	13.00	15.10	19.05	21.00
15	14.00	16.10	20.05	22.00
16	15.00	17.10	21.05	23.00
17	16.00	18.10	22.05	24.00
18	17.00	19.10	23.05	25.00
19	18.00	20.10	24.05	26.00
20	19.00	21.10	25.05	27.00
21	20.00	22.10	26.05	28.00
22	21.00	23.10	27.05	29.00
23	22.00	24.10	28.05	30.00
24	23.00	25.10	29.05	31.00
25	24.00	26.10	30.05	32.00
26	25.00	27.10	31.05	33.00
27	26.00	28.10	32.05	34.00
28	27.00	29.10	33.05	35.00
29	28.00	30.10	34.05	36.00
30	29.00	31.10	35.05	37.00

Note:

1. Material:
 - 1.1 Housing: thermoplastic high temp. UL94V-0; Color: natural.
 - 1.2 Latch: thermoplastic high temp. UL94V-0; Color: black.
 - 1.3 Cover: thermoplastic high temp. UL94V-0; Color: black.
 - 1.4 Terminal: copper alloy T=0.25mm
2. Finish:
 - 2.1 Terminal: Underplating: matt Tin overall.
3. Product must comply HF RoHS specification.

PART NO. SPEC

AF2G XX R * S 2 T 1 0_Q0Q1

NO. OF CKTS
CONTACT TYPE
R:180° SMT Normal

PACKING CODE
P:Tape & Reel
T:Tube

PLATING CODE
0:MATT-Tin 90-120u"
1:GOLD FLASH 1u"
2:GOLD FLASH 2u"
3:GOLD FLASH 3u"
A:Point Gold-plated 1u"
B:Point Gold-plated 2u"
C:Point Gold-plated 3u"

CUSTOMER DRAWING

Tolerance Unspecified (未注公差)
0.0 ±0.15 0° ±5°
0.00 ±0.10 0° ±3°
0.000 ±0.05 0° 00 ±1°

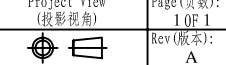
Size (图幅): A4
Unit (单位): MM
Scale (比例): 1:1
Page (页数): 1 OF 1

Project View (投影视角): 1 OF 1
Rev (版本): A

深圳扬讯电子有限公司

Product Name (产品名称): 1.0Pitch H=5.6 FPC ZIF CONN. S/A SMT K TYPE
Product No (产品料号): AF2GXXR*S2T10_Q0Q1

Rev 版本	Change Description 变更内容	Date 日期	Revisor 制/修订人
A	初版发行	2011/12/23	Allan



Designer (设计):	Checked (审核):	Approved (核准):
Steven 12/23/11	Allan 12/23/11	