



马达出厂规格 (MOTOR OUTGOING SPECIFICATION)

客户(CUSTOMER): _____
 型号(MODEL) : RBE. 102036-005
 版本号(REV.) : B
 日期(DATE) : 2022. 04. 16

客户确认/日期 CONFIRM BY CUSTOMER/DATE	
-------------------------------------	--

编制(PREPARED): 曹建
 审核(CHECKED): _____
 批准(APPROVED): _____

1. 适用范围(SCOPE)

本文规定的测试条件和技术要求适用于深圳市中驱电机有限公司交付的直流无刷电机。 RBE. 102036-005

This document defines the test standard and specification for BLDC motor which is delivered by CHINA DRIVE MOTORS(SHENZHEN) CO., LTD. RBE. 102036-005

2. 结构形式 (Construction-form)

- 2.1 马达结构 (Mtor construction) : 轮毂电机
- 2.2 相数 (Number of phases) : 3相
- 2.3 铁芯槽数 (Core slot number) : 27
- 2.4 磁极数 (Number of magnet poles) : 30
- 2.5 霍尔机械角度 (Hall mechanical Angle) : 40°
- 2.6 硅钢片牌号 (Silicon steel type) : 50H310
- 2.7 永磁体牌号 (Magnet type) : N45SH
- 2.8 滚珠轴承 (Ball BEARING) : 6005-2RS/6303-2RS

3. 标准工作条件(STANDARD OPERATING CONDITIONS)

- 3.1 额定电压(Rated Voltage): DC 36V
- 3.2 运行条件(Operating Condition): 温度(Temp.): -10°C~+40°C
相对湿度(Relative Humidity): 5~85%
- 3.3 保存条件(Storage Condition): 温度(Temp.): -20°C~+40°C
相对湿度(Relative Humidity): 5%~90%
- 3.4 旋转方向(Direction of Rotation): CCW&CW

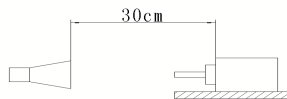
4. 电气性能(ELECTRICAL CHARACTERISTIC)

- 4.1 空载电流(No Load Current): ≤1700 mA
- 4.2 空载转速(No Load Speed): 900±5% RPM
- 4.3 负载电流(Rated Load Current): ≤13.5 A
- 4.4 负载转速(Rated Load Speed): 745±5% RPM
- 4.5 额定负载(Rate Load): 5000 mN.m
- 4.6 额定功率(Rate Power): 390W
- 4.7 附性能曲线(Performance Curve Attached)

5. 机械特性(MECHANICAL CHARACTERISTIC)

- 5.1 重量(Weight): ≈2535 g
- 5.2 外形(Outline): Refer to outline drawing
- 5.3 噪音(Noise): ≤60 dB(A)

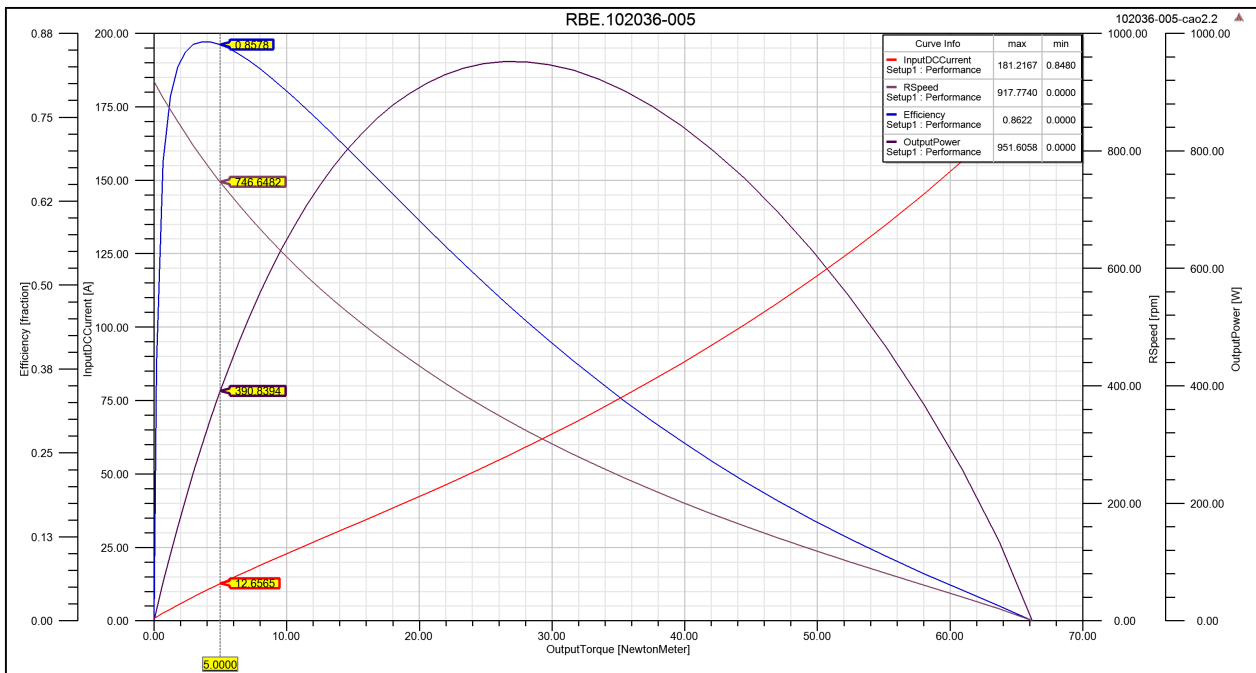
测试条件: 常温常湿, 背景噪音<25dB(A), 距离马达端面30cm, 额定电压空载运行。
 Test Condition: Normal temp. and humidity, background noise is 25dB(A) Max., 30cm away from motor mounting surface, rated voltage and no load.

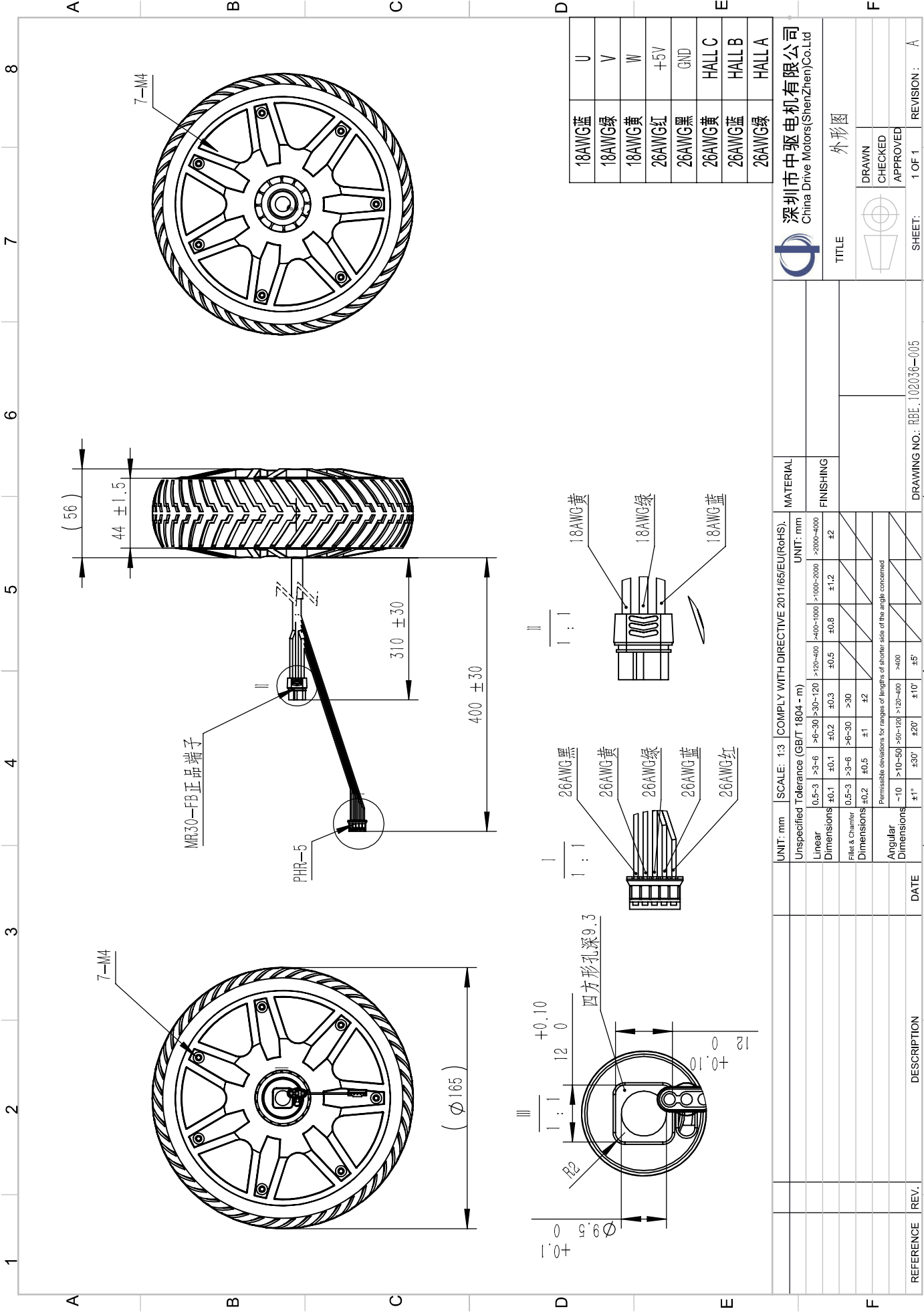



麦克风
(Microphone)




马达 (Mtor)

海绵 (Foam) 10mm






深圳市中驱电机有限公司
 China Drive Motors (ShenZhen) Co., Ltd.

TITLE: 外形图
 DRAWN: 
 CHECKED: 
 APPROVED: 
 SHEET: 1 OF 1 REVISION: A

UNIT: mm	SCALE: 1:3	COMPLY WITH DIRECTIVE 2011/65/EU(RoHS).	MATERIAL
Unspecified	Tolerance (GB/T 1804 - m)		
Linear	0.5-3 >3-6 >6-30 >30-120 >120-400 >400-1000 >1000-2000 >2000-4000	±0.1 ±0.1 ±0.2 ±0.3 ±0.5 ±0.8 ±1.2 ±2	FINISHING
Dimensions	0.5-3 >3-6 >6-30 >30-120 >120-400 >400-1000 >1000-2000 >2000-4000	±0.2 ±0.5 ±1 ±2	
Filets & Chamfer	Permissible deviations for ranges of lengths of shorter side of the angle concerned	±10° ±20° ±30° ±45°	
Angular			
Dimensions			

UNIT: mm	SCALE: 1:1	COMPLY WITH DIRECTIVE 2011/65/EU(RoHS).	MATERIAL
Unspecified	Tolerance (GB/T 1804 - m)		
Linear	0.5-3 >3-6 >6-30 >30-120 >120-400 >400-1000 >1000-2000 >2000-4000	±0.1 ±0.1 ±0.2 ±0.3 ±0.5 ±0.8 ±1.2 ±2	FINISHING
Dimensions	0.5-3 >3-6 >6-30 >30-120 >120-400 >400-1000 >1000-2000 >2000-4000	±0.2 ±0.5 ±1 ±2	
Filets & Chamfer	Permissible deviations for ranges of lengths of shorter side of the angle concerned	±10° ±20° ±30° ±45°	
Angular			
Dimensions			

UNIT: mm	SCALE: 1:1	COMPLY WITH DIRECTIVE 2011/65/EU(RoHS).	MATERIAL
Unspecified	Tolerance (GB/T 1804 - m)		
Linear	0.5-3 >3-6 >6-30 >30-120 >120-400 >400-1000 >1000-2000 >2000-4000	±0.1 ±0.1 ±0.2 ±0.3 ±0.5 ±0.8 ±1.2 ±2	FINISHING
Dimensions	0.5-3 >3-6 >6-30 >30-120 >120-400 >400-1000 >1000-2000 >2000-4000	±0.2 ±0.5 ±1 ±2	
Filets & Chamfer	Permissible deviations for ranges of lengths of shorter side of the angle concerned	±10° ±20° ±30° ±45°	
Angular			
Dimensions			

UNIT: mm	SCALE: 1:1	COMPLY WITH DIRECTIVE 2011/65/EU(RoHS).	MATERIAL
Unspecified	Tolerance (GB/T 1804 - m)		
Linear	0.5-3 >3-6 >6-30 >30-120 >120-400 >400-1000 >1000-2000 >2000-4000	±0.1 ±0.1 ±0.2 ±0.3 ±0.5 ±0.8 ±1.2 ±2	FINISHING
Dimensions	0.5-3 >3-6 >6-30 >30-120 >120-400 >400-1000 >1000-2000 >2000-4000	±0.2 ±0.5 ±1 ±2	
Filets & Chamfer	Permissible deviations for ranges of lengths of shorter side of the angle concerned	±10° ±20° ±30° ±45°	
Angular			
Dimensions			

UNIT: mm	SCALE: 1:1	COMPLY WITH DIRECTIVE 2011/65/EU(RoHS).	MATERIAL
Unspecified	Tolerance (GB/T 1804 - m)		
Linear	0.5-3 >3-6 >6-30 >30-120 >120-400 >400-1000 >1000-2000 >2000-4000	±0.1 ±0.1 ±0.2 ±0.3 ±0.5 ±0.8 ±1.2 ±2	FINISHING
Dimensions	0.5-3 >3-6 >6-30 >30-120 >120-400 >400-1000 >1000-2000 >2000-4000	±0.2 ±0.5 ±1 ±2	
Filets & Chamfer	Permissible deviations for ranges of lengths of shorter side of the angle concerned	±10° ±20° ±30° ±45°	
Angular			
Dimensions			