

无刷电机规格承认书

(BLDC PRODUCT SPECIFICATION)

客户名称: _____
客户型号: _____
CND内部型号: RIM. B01715012
版本号 (REV.): A/1
日期 (DATE): 2021. 11. 18

| | |
|--------------------------|--|
| 客户确认/日期 | |
| CONFIRM BY CUSTOMER/DATE | |

编制 (PREPARED): _____
审核 (CHECKED): _____
批准 (APPROVED): _____

1. 适用范围 (SCOPE)

本文规定的测试条件和技术要求适用于深圳市中驱电机有限公司交付的 RIM. B01715012 高速直流无刷电机。

This document defines the test standard and specification for RIM. B01715012 High Speed BLDC motor which is delivered by CHINA DRIVE MOTORS (SHENZHEN) CO., LTD.

2. 标准工作条件 (STANDARD OPERATING CONDITIONS)

- | | |
|-----------------------------------|--|
| 2.1 额定电压 (Rated Voltage): | DC 12 V |
| 2.2 运行条件 (Operating Condition): | 温度 (Temp.): $0^{\circ}\text{C} \sim +60^{\circ}\text{C}$ 相对湿度 (Relative Humidity): $0 \sim 80\%$ (不结露) |
| 2.3 保存条件 (Storage Condition): | 温度 (Temp.): $-10^{\circ}\text{C} \sim +70^{\circ}\text{C}$ 相对湿度 (Relative Humidity): $10 \sim 65\%$ (不结露) |
| 2.4 旋转方向 (Direction of Rotation): | CCW (从风叶端看) |

3. 带PCB板电气性能 (ELECTRICAL CHARACTERISTIC WITH CUSTOMIZED PCB)

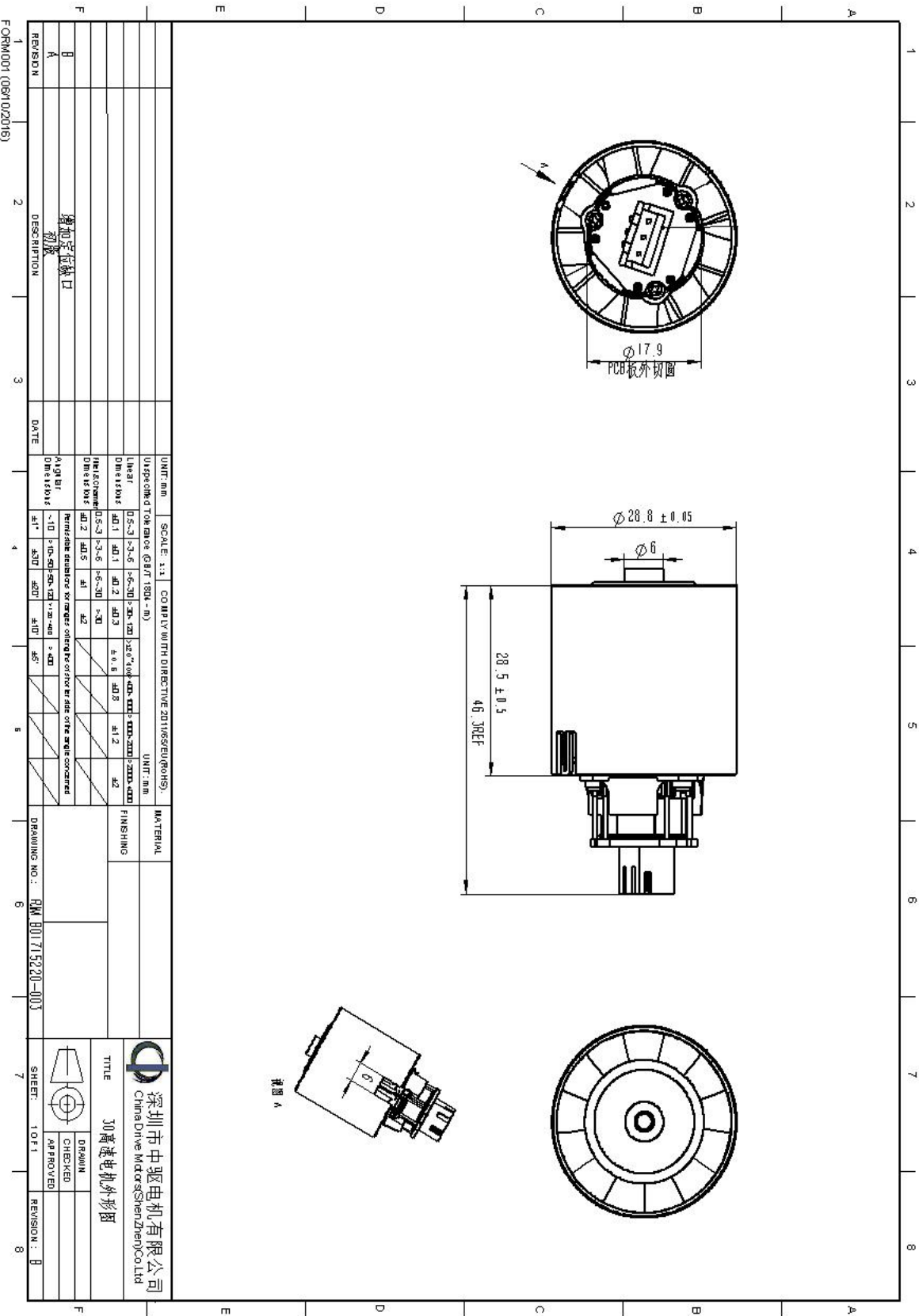
- | | |
|-----------------------------------|---|
| 3.1 电流 (Current): | 高档 ≤ 5.5 A Max |
| 3.2 转速 (Speed): | 83000 RPM MAX |
| 3.3 负载 (Rate Load): | 铝合金风扇叶 |
| 3.4 功率 (Power): | 66 W Max. |
| 3.5 风速 (Wind Speed): | 14 m/s MIN (出风口与测试设备距离10cm, 83000rpm) |
| 3.6 风量 (Wind Flow): | ≥ 50 g (出风口与测试设备距离10cm, 83000rpm) |
| 3.7 两相电感: | LD=25 \pm 8% μH LQ=31 \pm 8% μH |
| 3.8 两相电阻: | 0.18 \pm 8% Ω |
| 3.9 绝缘阻抗 (Insulation Resistance): | 冷态状态下, 500VDC, $\geq 10\text{M}\Omega$ |

4. 机械特性 (MECHANICAL CHARACTERISTIC)

- | | |
|------------------------------|--|
| 4.1 重量 (Weight): | 55 \pm 2 g |
| 4.2 外形 (Outline): | Refer to outline drawing |
| 4.3 机械噪音 (Mechanical Noise): | ≤ 80 dB (A) 测试条件: 常温常湿, 背景噪音 $< 28\text{dB (A)}$, 距离30cm处麦克风正对电机机壳, 额定电压运行。 Test Condition: Normal temp. and humidity, background noise is 28dB (A) Max, 30cm away from motor housing surface, rated voltage . |

5. 寿命 (LIFE WITH CUSTOMIZED PCB)

总运行时间 ≥ 1000 小时
Rotation Time More Than 1000 hours
测试条件: 常温常湿, 额定电压DC12V, 开15分钟, 停15分钟, 一个循环;
Normal Room Temperature, Normal Humidity, Rated Voltage of DC12V, Rotation For 15 Minutes ; Stop For 15 Minutes; One Cycle;



| | | | | | | | |
|------------|-------|------------|---------|---|-------|------------|----------|
| UNITS: mm | | SCALE: 1:1 | | COMPLY WITH DIRECTIVE 2011/65/EU (RoHS) | | MATERIAL | |
| LINEST | | LINEST | | UNIT: mm | | FINISHING | |
| 0.5-3 | 0.5-5 | 0.5-30 | 0.5-120 | 0.5-2 | 0.5-1 | 0.5-200 | 0.5-1000 |
| 0.1 | 0.1 | 0.2 | 0.3 | 0.8 | 0.8 | 0.2 | 0.2 |
| DIMENSIONS | | DIMENSIONS | | DIMENSIONS | | DIMENSIONS | |
| 0.5-3 | 0.5-5 | 0.5-30 | 0.5-120 | 0.5-2 | 0.5-1 | 0.5-200 | 0.5-1000 |
| 0.1 | 0.1 | 0.2 | 0.3 | 0.8 | 0.8 | 0.2 | 0.2 |
| DIMENSIONS | | DIMENSIONS | | DIMENSIONS | | DIMENSIONS | |
| 0.5-3 | 0.5-5 | 0.5-30 | 0.5-120 | 0.5-2 | 0.5-1 | 0.5-200 | 0.5-1000 |
| 0.1 | 0.1 | 0.2 | 0.3 | 0.8 | 0.8 | 0.2 | 0.2 |

| REVISION | DESCRIPTION | DATE |
|----------|-------------|------|
| A | 增加定位缺口 | |

| | |
|----------|----------|
| TITLE | 30速电机外形图 |
| DRAWN | |
| CHECKED | |
| APPROVED | |