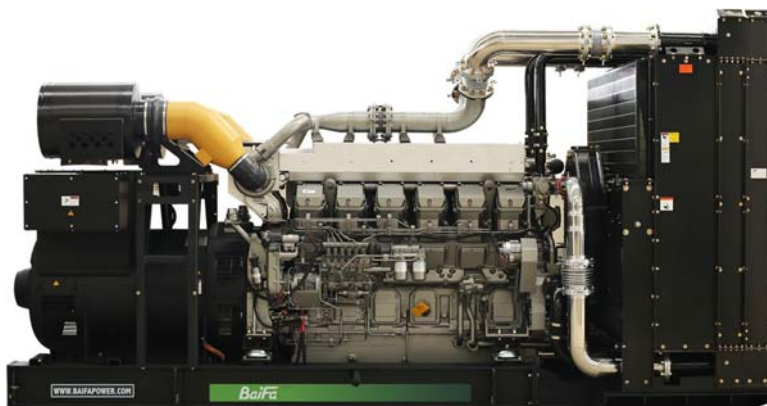


**MODEL: BF-SM1650**

**400V | 1500rpm | 50Hz**



<b>ESP</b> Standby Power	<b>1650 kVA</b>	<b>PRP</b> Prime Power	<b>1500 kVA</b>
<b>ENGINE</b>	<b>MITSUBISHI</b>	<b>ALTERNATOR</b>	<b>STAMFORD</b>
	<b>S12R-PTAA2-C</b>		<b>S7L1D-C4</b>

**GENERAL FEATURES**

Engine: MITSUBISHI S12R-PTAA2-C

Alternator: single bearing, IP23, insulation class H

40°C radiator, fans are driven by belt, with safety guard

Dry type air filter, fuel filter & oil filter

Vibration damper

Standard control panel

24V charging alternator

Exhaust bellows, elbows, flange & muffler

Lead-acid batteries, rack and cables

User manual

**MODEL: BF-SM1650****400V | 1500rpm | 50Hz****GENERATOR RATINGS**

Voltage	Hz	Phase	PF ( COSΦ )	Standby Amps	Standby Ratings (kW / kVA)	Prime Ratings (kW / kVA)
440/254	50	3	0.8	2165	1320/1650	1200/1500
415/240	50	3	0.8	2295	1320/1650	1200/1500
400/230	50	3	0.8	2381	1320/1650	1200/1500
380/220	50	3	0.8	2506	1320/1650	1200/1500

Prime Power (PRP): Prime power is available for an unlimited number of annual hours in variable load application, in accordance with GB/T2820 ( eqv ISO 8528 ) ; A 10% overload capability is available for a period of 1 hour within a 12-hour period of operation.

Standby Power Rating (ESP): The standby power rating is applicable for supplying emergency power for the duration of a utility power interruption. No overload, utility parallel or negotiated outage operation capability is available at this rating.

**SALES PROMISES**

Baifa Power provides a full line of brand new and high quality products. Each and every unit is strictly factory tested.

Warranty is according to our standard conditions: 15 months from the date BAIFA sold to the first buyer or one year after installation or 1000 running hours (accumulated), whichever comes first.

Service and parts are available from Baifa Power or distributors in your location.

**MODEL: BF-SM1650****400V | 1500rpm | 50Hz****ENGINE SPECIFICATION**

Manufacturer / Model	Mitsubishi S12R-PTAA2-C
Air intake system	Turbo, Air/Air Cooling
Fuel system	Mitsubishi PS6
Cylinder arrangement	12 in "V"
Displacement	49.03L
Bore and stroke	170×180 (mm)
Compression ratio	13.5
Rated speed	1500rpm
Max. Standby power at rated speed	1404KW/1882HP
Governor type	Electronic

**Exhaust System**

Exhaust gas flow	343 m <sup>3</sup> /min
Exhaust temperature	520 °C
Max back pressure	5.8kPa

**Air Intake System**

Max intake restriction	6.1kPa
Combustion air flow	126 m <sup>3</sup> /min
Air flow required for radiator	2100 m <sup>3</sup> /min

**MODEL: BF-SM1650**

**400V | 1500rpm | 50Hz**

**Fuel System**

Fuel consumption @ 100% (Prime Power) Load	221 g/kWh	338.7 L/h
Fuel consumption @ 75% (Prime Power) Load	N/A	N/A
Fuel consumption @ 50% (Prime Power) Load	N/A	N/A

**Oil System**

Total oil capacity	180L
Oil consumption	≤4g/kwh
Oil sump capacity	110~150L

**Cooling System**

Coolant capacity	320L
Max water temperature	98°C

**MODEL: BF-SM1650****400V | 1500rpm | 50Hz****ALTERNATOR SPECIFICATION**

Industrial alternators meet the requirements of the relevant parts of the BS5000, VDE 0530, NEMA MG1-22, IEC34, CSA 22.2-100 and AS1359.

**Alternator Data**

Number of Phase	3
Connecting Type	3 Phase and 4 Wires, Y type connecting
Number of Bearing	1
Power Factor	0.8
Protection Class	IP23
Altitude	≤1000m
Exciter Type	Brushless exciting
Insulation Class/Temperature Rise	H/H
Telephone Influence Factor (TIF)	<50
THF	<2%
Alternator Capacity	1550kVA
Alternator Efficiency	95.4%

**MODEL: BF-SM1650****400V | 1500rpm | 50Hz****GENERATING SET DATA**

Related range of voltage setting	$\geq \pm 5\%$
Steady-state voltage deviation	$\leq \pm 1\%$
Transient voltage deviation (100 % sudden power decrease)	$\leq +25\%$
Transient voltage deviation (sudden power increase)	$\leq -20\%$
Voltage recovery time (100 % sudden power decrease)	$\leq 6S$
Voltage recovery time (sudden power increase)	$\leq 6S$
Related range of frequency setting	0-5% adjustable
Steady-state frequency band	$\leq 1.5\%$
Transient frequency deviation (100 % sudden power decrease)	$\leq +12\%$
Transient frequency deviation (sudden power increase)	$\leq -10\%$
Frequency recovery time (100 % sudden power decrease)	$\leq 5S$
Frequency recovery time (sudden power increase)	$\leq 5S$

**STANDARD FEATURES**

Standard auto control system	Exhaust system (including until muffler)	Documents
Oil drain valve	Starting batteries (maintenance-free & watering-free) with connective wires	

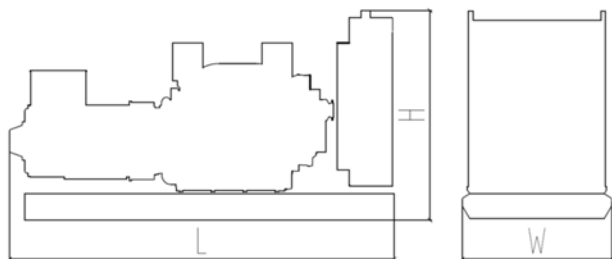
**MODEL: BF-SM1650**

**400V | 1500rpm | 50Hz**

**OPTIONS**

Daily fuel tank	Rainproof type	Remote control panel
Alternator heater	Soundproof type	Paralleling system
Spare parts	Trailer type	Switch box
Automatic transfer switch		

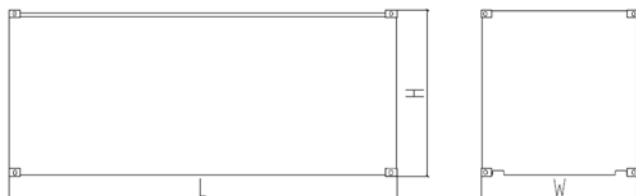
**DIMENSIONS & WEIGHT**



**Standard Configuration (open type)**

Overall Dimensions: 5000×2200×2550 mm

Weight: 12800 kg



**Soundproof Type (standard 20'ft HQ container)**

Overall Dimensions: 6058×2438×2896 mm

Weight: 17800 kg

*Specifications are subject to change without notice.*

**BAIFA POWER (WUXI) LTD.**  
**WEBSITE: WWW.BAIFAPOWER.COM**  
**EMAIL: MARKETING@BAIFAPOWER.COM**  
**TEL: +86-510-85342633**