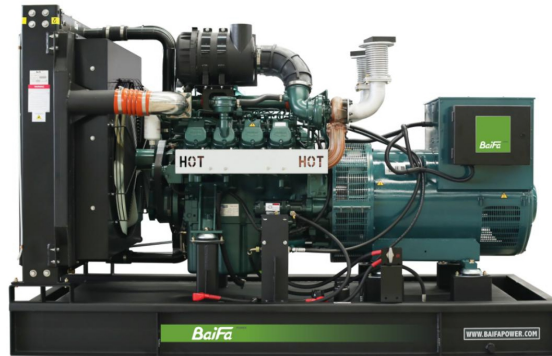


MODEL: BF-DW400

400V | 1500rpm | 50Hz



ESP

Standby Power

406 kVA

PRP

Prime Power

360 kVA

ENGINE

Doosan

DP126LB

ALTERNATOR

STAMFORD

S4L1D-E41

GENERAL FEATURES

Engine: Doosan DP126LB

Alternator: single bearing, IP23, insulation class H

40°C radiator, fans are driven by belt, with safety guard

Dry type air filter, fuel filter & oil filter

Vibration damper

Standard control panel

24V charging alternator

Exhaust bellows, elbows, flange & muffler

Lead-acid batteries, rack and cables

User manual

**MODEL: BF-DW400****400V | 1500rpm | 50Hz**

GENERATOR RATINGS

Voltage	Hz	Phase	PF (COS Φ)	Standby Amps	Standby Ratings (kW / kVA)	Prime Ratings (kW / kVA)
440/254	50	3	0.8	533	325kW/406kVA	288kW/360kVA
415/240	50	3	0.8	565	325kW/406kVA	288kW/360kVA
400/230	50	3	0.8	586	325kW/406kVA	288kW/360kVA
380/220	50	3	0.8	617	325kW/406kVA	288kW/360kVA

Prime Power (PRP): Prime power is available for an unlimited number of annual hours in variable load application, in accordance with GB/T2820 (eqv ISO 8528) ; A 10% overload capability is available for a period of 1 hour within a 12-hour period of operation.

Standby Power Rating (ESP): The standby power rating is applicable for supplying emergency power for the duration of a utility power interruption. No overload, utility parallel or negotiated outage operation capability is available at this rating.

SALES PROMISES

Baifa Power provides a full line of brand new and high quality products. Each and every unit is strictly factory tested.

Warranty is according to our standard conditions: 15 months from the date BAIFA sold to the first buyer or one year after installation or 1000 running hours (accumulated), whichever comes first.

Service and parts are available from Baifa Power or distributors in your location.

**MODEL: BF-DW400****400V | 1500rpm | 50Hz****ENGINE SPECIFICATION**

Manufacturer / Model	Doosan DP126LB
Air intake system	Turbo, Air/Air cooling
Fuel system	P type fuel pump
Cylinder arrangement	6 in line
Displacement	11.051L
Bore and stroke	123×155 mm
Compression ratio	17:1
Rated speed	1500rpm
Max. Standby power at rated speed	362kW
Governor type	Electronic

Exhaust System

Exhaust gas flow	58.3 m ³ /min
Exhaust temperature	590℃
Max back pressure	5.9kPa

Air Intake System

Max intake restriction	6.2kPa
Combustion air flow	20.9 m ³ /min
Air flow required for radiator	528 m ³ /min



MODEL: BF-DW400

400V | 1500rpm | 50Hz

Fuel System

Fuel consumption @ 100% (Prime Power) Load	76 L/h
Fuel consumption @ 75% (Prime Power) Load	57.1 L/h
Fuel consumption @ 50% (Prime Power) Load	38.4 L/h

Oil System

Total oil capacity	44L
Oil sump capacity	20-44L

Cooling System

Coolant capacity	51L
Max water temperature	110°C

**MODEL: BF-DW400****400V | 1500rpm | 50Hz**

ALTERNATOR SPECIFICATION

Industrial alternators meet the requirements of the relevant parts of the BS5000, VDE 0530, NEMA MG1-22, IEC34, CSA 22.2-100 and AS1359.

Alternator Data

Number of Phase	3
Connecting Type	3 Phase and 4 Wires, Y type connecting
Number of Bearing	1
Power Factor	0.8
Protection Class	IP23
Altitude	≤1000m
Exciter Type	Brushless exciting
Insulation Class/Temperature Rise	H/H
Telephone Influence Factor (TIF)	<50
THF	<2%
Alternator Capacity	360kVA
Alternator Efficiency	93.3%

**MODEL: BF-DW400****400V | 1500rpm | 50Hz**

GENERATING SET DATA

Related range of voltage setting	$\geq \pm 5\%$
Steady-state voltage deviation	$\leq \pm 1\%$
Transient voltage deviation (100 % sudden power decrease)	$\leq +25\%$
Transient voltage deviation (sudden power increase)	$\leq -20\%$
Voltage recovery time (100 % sudden power decrease)	$\leq 6S$
Voltage recovery time (sudden power increase)	$\leq 6S$
Related range of frequency setting	0-5% adjustable
Steady-state frequency band	$\leq 1.5\%$
Transient frequency deviation (100 % sudden power decrease)	$\leq +12\%$
Transient frequency deviation (sudden power increase)	$\leq -10\%$
Frequency recovery time (100 % sudden power decrease)	$\leq 5S$
Frequency recovery time (sudden power increase)	$\leq 5S$

STANDARD FEATURES

Standard auto control system	Exhaust system (including until muffler)	Documents
Oil drain valve	Starting batteries (maintenance-free & watering-free) with connective wires	MCCB

MODEL: BF-DW400**400V | 1500rpm | 50Hz****OPTIONS**

Daily fuel tank

Rainproof type

Remote control panel

Alternator heater

Soundproof type

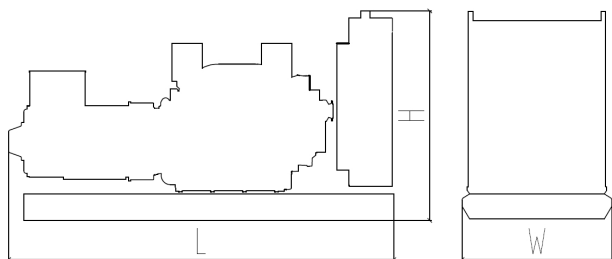
Paralleling system

Spare parts

Trailer type

Switch box

Automatic transfer switch

DIMENSIONS & WEIGHT**Standard Configuration (open type)**

Overall Dimensions: 2960×1400×1850 mm

Weight: 2450 kg

Standard Configuration (with base fuel tank)

Overall Dimensions: 2960×1400×1850 mm

Weight: 2600 kg

Soundproof Type

Overall Dimensions: 3980×1560×2150 mm

Weight: 3750 kg

*Specifications are subject to change without notice.***BAIFA POWER (WUXI) LTD.****WEBSITE: WWW.BAIFAPOWER.COM****EMAIL: MARKETING@BAIFAPOWER.COM****TEL: +86-510-85342633**

Comprehensive Solutions For

POWER GENERATION