

HM(D)SERIES SUBMERSIBLE ELECTRIC PUMP

APPLICATION

- ◆ Agricultural irrigation
- ◆ Water drawn from pond
- ◆ Drought and drainage
- ◆ Domestic application

STRANARD

Voltage: 1~220V/50Hz
Cable length: 10m

SPECIFICATION

- ◆ Maximum flow rate: 16m³/h
- ◆ Maximum head: 22m
- ◆ Continuous service: S1
- ◆ Allowable voltage fluctuation: ±10%
- ◆ Protection degree: IP68
- ◆ Insulation class: F
- ◆ Maximum immersion depth: 5m
- ◆ Pump liquid temperature: 0~40°C
- ◆ Solid content of pumped liquid on volume: ≤0,1%
- ◆ Solid content of pumped liquid on size: ≤2mm
- ◆ Pumped liquid PH: 6,5~8,5
- ◆ Built-in capacitor and over-load protector

CONSTRUCTION&CHARACTERISTICS

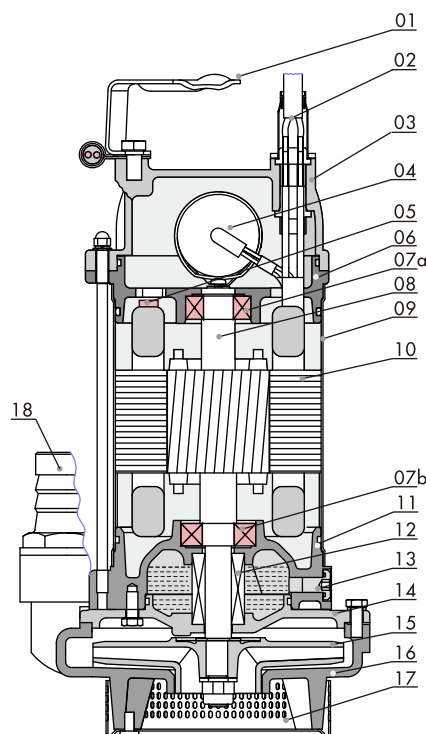
- ◆ Stainless steel motor shell and fastener
- ◆ Strong ABS impeller and cast iron pump casing
- ◆ Double protection of Italian mechanical seal
- ◆ Dry type motor
- ◆ Food grade lubricating oil, environment friendly

OPTIONAL FEATURES

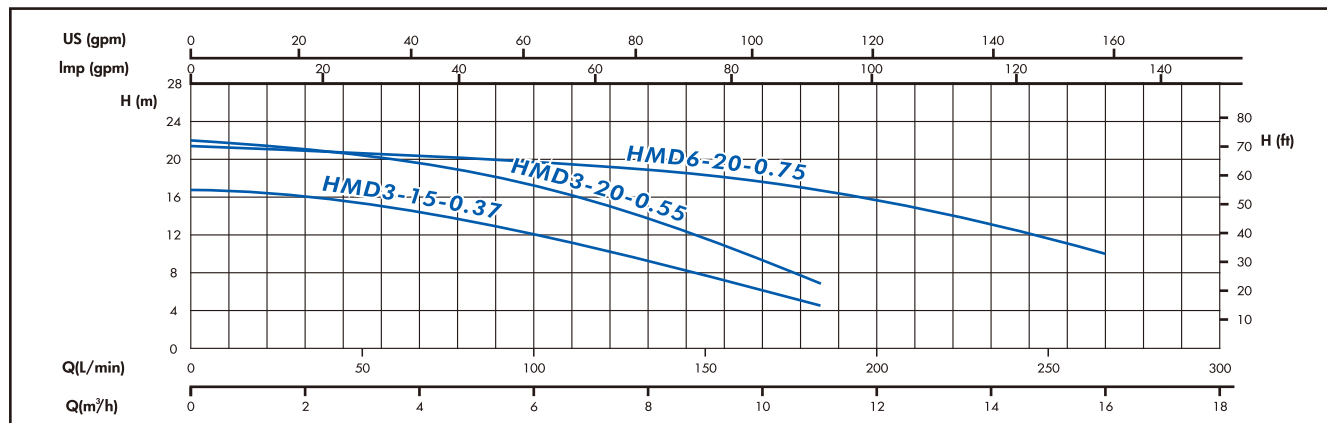
Different cable length
Different outlet size

PUMP SECTION AND MATERIAL OF MAIN COMPONENTS

REF.N.	PART	MATERIAL
01	Lifting handle	AISI430
02	Removable cable with plug	-----
03	Cover	Ht200
04	Capacitor	-----
05	Over-load protector	-----
06	Upper support	Ht200
07a	Bearing	-----
07b	Bearing	-----
08	Rotor	-----
09	Stator shell	AISI201
10	Stator	-----
11	Lower bracket	HT200
12	Mechanical seal	-----
13	Filling screw	AISI304
14	Pump cover	HT200
15	Impeller	PPO
16	Pump body	HT200
17	Filter	STEEL
18	Outlet	HT200

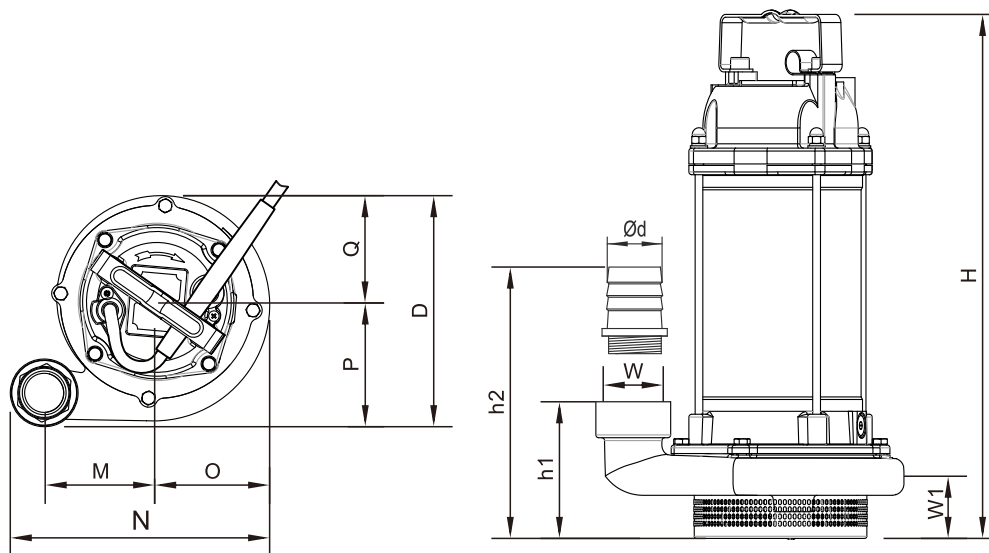


OPERATING CHARACTERISTICS AT 50HZ 2850RPM



OPERATING CHARACTERISTICS AT 50HZ 2850RPM

MODEL	kW	Hp	Q=DELIVERY	33,3	66,7	100	133	200	250	300	Q.Max (m³/h)
			l/min 0 m³/h 0 H=HEAD	2	4	6	8	12	15	18	
HMD3-15-0,37	0,37	0,5	16,5	16	14,5	12	10	-	-	-	11
HMD3-20-0,55	0,55	0,75	22	21	19,5	17	14	-	-	-	11
HMD6-20-0,75	0,75	1,0	21	21	20,5	20	18,5	15,8	12	-	16



DIMENSIONS AND WEIGHTS

MODEL	DIMENSION(mm)												N.W. kg	G.W. kg
	Ød	h1	h2	W	W1	H	O	P	Q	D	M	N		
HMD3-15-0,37	32	101	158,5	G1"	46	349	79,5	84,5	74,5	159	85,5	186	11,5	12,1
HMD3-20-0,55	32	97	152	G1"1/4	45	361	87	103	72	185	80	193	13,6	14,5
HMD6-20-0,75	38	109	164	G1"1/2	47	390	88	108	73	185	90	204	14,6	15,5